

Breast procedures offered at GHS

- 📍 Screening Digital Mammograms (with CAD)
- 📍 Diagnostic Digital Mammograms (with CAD)
- 📍 Breast MRI
- 📍 Breast PET/CT
- 📍 Breast Ultrasound
- 📍 Ductogram
- 📍 Needle Localization
- 📍 Radioisotope Injection
- 📍 Sonohystogram
- 📍 Stereotactic core biopsy
- 📍 Ultrasound-guided core biopsy
- 📍 Ultrasound-guided fine needle cyst aspiration
- 📍 Vacuum-assisted biopsies

Other Women's Imaging procedures:

- 📍 Bone Densitometry & Vertebral Fracture Assessment
- 📍 Gynecologic Ultrasound
- 📍 Obstetric Ultrasound
- 📍 Ovarian PET/CT
- 📍 Thyroid Ultrasound
- 📍 Thyroid PET/CT
- 📍 Thyroid SPECT/CT
- 📍 UFE (Uterine Fibroid Embolization)

Finding out the Results

Your mammogram will be read by a board-certified radiologist. The radiologist's report will be sent to your physician and your physician will notify you of the results. Be sure to ask your physician when you will receive the results of your mammogram. If you do not hear from your physician, do not assume your mammogram was normal. Confirm this by calling your physician's office.

To schedule your Mammogram at GHS

Please contact GHS Imaging Scheduling at 678.312.3444, with questions regarding your mammogram, breast procedure or to schedule your appointment.

Map & Directions



Gwinnett Hospital System Locations

Call our Direction Line at 678.312.4652 for directions to any Gwinnett Hospital System facility, or visit www.gwinnettmedicalcenter.org.

Gwinnett Hospital System Film File Library

To check out your images, contact the Imaging Film Library:

Main Number 678.312.5663
Fax Number 770.339.3751



Lawrenceville • Duluth
The hospital Gwinnett deserves.

www.gwinnettmedicalcenter.org

Digital Mammography



 **Gwinnett**
Medical Center
Lawrenceville • Duluth
The hospital Gwinnett deserves.

Imaging Services

What is a Mammogram?

A mammogram is an x-ray examination of the breasts, used to detect and diagnose breast cancer and other diseases. This exam uses very low doses of radiation.

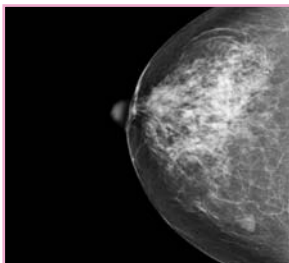
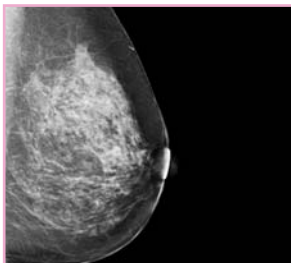
Screening mammography is used as a preventive measure for women who have no symptoms of breast disease. A screening mammogram usually involves two views of each breast. Diagnostic mammography involves additional views of the breast, and is used when an abnormality is found during screening, or in women who have breast complaints, such as a breast mass, nipple discharge, breast pain, or skin irritation.

Regular mammograms are the single-most effective tool for detecting breast cancer.

Latest Technology

All GHS imaging locations are fully-digital. Digital mammography uses x-ray beams are captured on specially designed digital detectors. The digital detector converts the x-ray beams into electronic signals, which are then sent to a computer. The radiologist can review the digital mammogram on a high-resolution computer monitor.

GHS also utilizes CAD technology or Computer-Aided Detection for all mammography exams. This new state-of-the-art technology highlights areas on the mammogram that may be associated with cancer. CAD acts as a second pair of eyes for the radiologist by providing these highlights.



Who Should Have Mammograms?

The American Cancer Society and GHS recommend that all women have a baseline screening mammogram between the age of 35 and 40. Beginning at the age of 40, women should have an annual screening mammogram. In addition to annual screening for women 40 and older, women with certain risk factors should discuss an appropriate screening program with their physician.



Risk Factors For Breast Cancer

Some of the **known** risk factors for breast cancer include:

- 🔒 Family or personal history of breast cancer
- 🔒 Early menstrual onset/late onset menopause
- 🔒 Use of oral contraceptives
- 🔒 Use of hormone replacement therapy
- 🔒 Alcohol use (2 or more drinks/day)

Are Mammograms Painful?

Breast compression may cause some discomfort for a brief time during each x-ray, but it should not be painful. Breast compression helps obtain better x-rays by:

- 🔒 Flattening the breast so that the maximum amount of tissue can be examined.
- 🔒 Allowing a lower x-ray dose to be used, since the x-ray beams pass through a thinner amount of tissue
- 🔒 Holding the breast in place to prevent blurring caused by motion.

Preparing for a Mammogram

Before scheduling your mammogram, the American Cancer Society and GHS recommend that you discuss any concerns with your doctor. In addition, inform them of any prior surgeries, hormone use, and family or personal history of breast cancer.

Do not schedule your mammogram for the week before your period if your breasts are usually tender during this time. Always inform your health providers if there is a possibility that you are pregnant.

- 🔒 Do not wear deodorant, powder or lotion under your arms or on your breasts; it may interfere with the quality of your mammogram.
- 🔒 Describe any symptoms or problems to the technologist.
- 🔒 If your prior mammograms were not performed at a GHS facility, please obtain the results and/or images and bring them to your exam.
- 🔒 Follow-up with your referring physician to discuss the results of your mammogram.

What to Expect

- 🔒 Wear two-piece clothing because you will need to undress from the waist up. You will be given a wrap to wear during the mammogram.
- 🔒 You and a breast imaging technologist will be the only ones present during the mammogram. The technologist will position each breast, one at a time, on the mammography equipment. The breast will then be compressed, and the x-ray will be taken.
- 🔒 During your digital mammogram, each x-ray will appear on the technologist's computer screen, and she will be able to make sure each image shows the right view before positioning you for the next image.
- 🔒 The entire procedure should take about 20 minutes.