

Gwinnett Hospital System

Gwinnett Hospital System has roots that date back over 60 years, with the opening of Joan Glancy Memorial Hospital in 1944. In 2006, we opened a new, fully-digital hospital, Gwinnett Medical Center-Duluth. Our 479-bed system includes three hospitals and supporting facilities. We are committed to building and expanding facilities and services to meet our community's needs. We take great pride in our role as guardians of our community's good health.

GHS Imaging Services Locations

In order to serve our growing community, Gwinnett Hospital System provides a comprehensive array of high-quality imaging services in Lawrenceville and Duluth. Our imaging services are offered at the following locations: Gwinnett Medical Center, 575 Outpatient Imaging Center, Gwinnett Women's Pavilion, Marion Allison Webb Center for Screening Mammography, Gwinnett Medical Center-Duluth and the Duluth Outpatient Center.

PACS

PACS or Picture Archiving Communication System provides web-based access to all images performed at our facilities. This allows physicians to view their patient's images immediately. Films and or CDs will still be available upon request.

Staff & Equipment

Our imaging centers are professionally staffed with board-certified radiologists, registered technologists and registered nurses. We are proud to offer high-quality, state-of-the-art imaging equipment. We invest in the latest technology manufactured by Siemens, Lorad, GE and Summit Nuclear, all leaders in their industry. All of our facilities offer cutting-edge technology. Our all-digital system provides improved image quality at lower radiation levels. Images are instantly available, providing shorter patient visits and timely interpretations.

Ordering Imaging Exams

We will pre-certify and schedule patients for the following: CT, MRI, PET/CT, Nuclear Medicine and Interventional Radiology procedures.

Our friendly, professional scheduling department may be reached at

678.312.3444

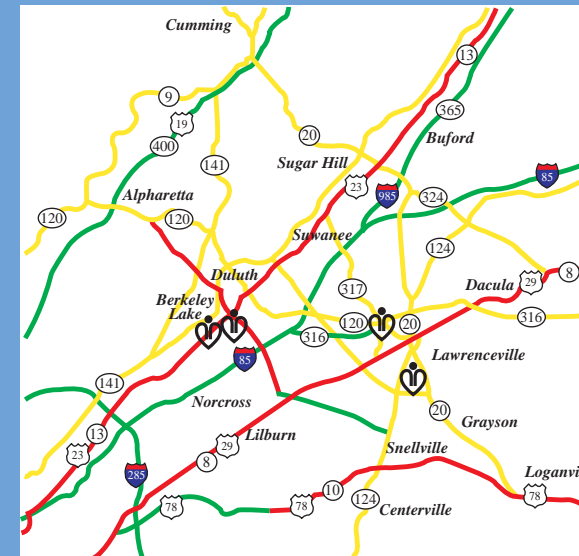
Papervision, our fax server, allows physicians to send orders directly into our system. Patients should also bring a copy of their order when they come for their appointment.

Fax orders to 678.312.9736

Efileshare.com is our web-based outpatient ordering system. This system allows the physician's office to submit orders and schedule exams, as well as communicate with the system, via the Internet.

www.efileshare.com

Map & Directions



Gwinnett Hospital System Locations

For directions to any Gwinnett Hospital System facility, please call our Direction Line at 678.312.4652, or visit www.gwinnettmedicalcenter.org.

Gwinnett Hospital System Film File Library

To pick up CDs or copies of your exam, please contact the Imaging Film Library:

Main Number	678.312.5664
Fax Number	770.339.3751



Lawrenceville • Duluth
The hospital Gwinnett deserves.

www.gwinnettmedicalcenter.org

Imaging Services



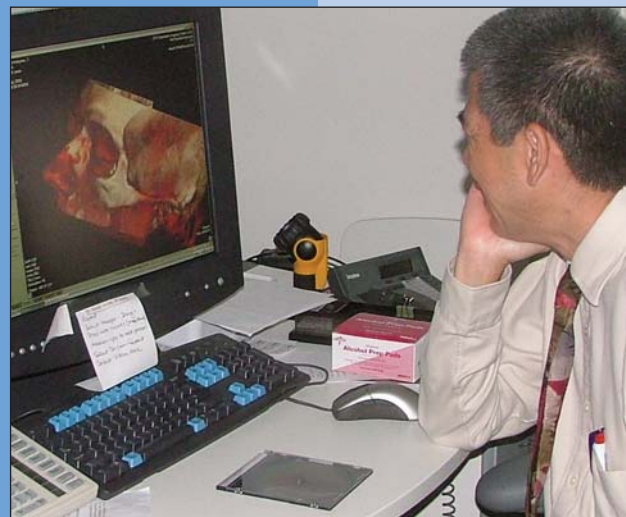
Gwinnett Medical Center

- 📍 Arthrography
- 📍 Breast MRI
- 📍 CT
- 📍 Diagnostic X-ray
- 📍 Fluoroscopy
- 📍 Hysterosalpingogram
- 📍 Image-Guided Invasive Procedures
- 📍 Image-Guided Needle Localization
- 📍 Interventional Radiology
- 📍 MRI
- 📍 Myelography
- 📍 Nuclear Medicine
- 📍 PET/CT
- 📍 SPECT/CT
- 📍 Ultrasound

Gwinnett Medical Center
1000 Medical Center Boulevard
Lawrenceville, Georgia 30045

Main Number 678.312.4440
Scheduling 678.312.3444
Fax Number 678.312.2243

* GHS utilizes digital mammography and CAD technology for all screening and diagnostic exams.



Women's Diagnostic Center

- 📍 Breast MRI (located at GMC-L)
- 📍 Cyst Aspiration / Fine Needle Aspiration
- 📍 Diagnostic Breast Ultrasound
- 📍 Diagnostic Digital Mammography*
- 📍 Ductogram
- 📍 Gynecological Ultrasound
- 📍 Image-Guided Needle Localization
- 📍 Male Breast Diagnostic Imaging
- 📍 Neonatal Ultrasound
- 📍 Obstetrical Ultrasound
- 📍 Radiostope Injection for Sentinel Lymph Node Identification
- 📍 Sonohysterogram
- 📍 Stereotactic Vacuum-Assisted Core Biopsy
- 📍 Ultrasound Vacuum-Assisted Core Biopsy

Women's Diagnostic Center
550 Medical Center Boulevard
Lawrenceville, Georgia 30045

Main Number 678.312.4770
Scheduling 678.312.3444
Fax Number 678.312.4769

Marion Allison Webb Center

- 📍 Bone Densitometry
- 📍 Screening Digital Mammography*

Marion Allison Webb Center for Screening Mammography
500 Medical Center Boulevard, Suite 190
Lawrenceville, Georgia 30045

Main Number 678.312.4070
Scheduling 678.312.3444
Fax Number 678.312.4084

Gwinnett Medical Center-Duluth

- 📍 CT
- 📍 Diagnostic X-ray
- 📍 Fluoroscopy
- 📍 Image-Guided Invasive Procedures
- 📍 Interventional Radiology
- 📍 Nuclear Medicine
- 📍 SPECT/CT
- 📍 Ultrasound

Gwinnett Medical Center-Duluth
3620 Howell Ferry Road
Duluth, Georgia 30096

Main Number 678.312.6693
Scheduling 678.312.3444
Fax Number 678.312.6696

575 Outpatient Imaging Center

- 📍 CT
- 📍 CT Screening
- 📍 Diagnostic X-ray
- 📍 EKG
- 📍 Fluoroscopy
- 📍 Imaging Vascular Lab
- 📍 Nuclear Medicine
- 📍 Ultrasound

575 Outpatient Imaging Center
575 Professional Drive, Suite 400
Lawrenceville, Georgia 30045

Main Number 678.312.5300
Scheduling 678.312.3444
Fax Number 678.312.5334

Duluth Outpatient Center

- 📍 Arthrography
- 📍 Bone Densitometry
- 📍 Breast MRI
- 📍 Breast Ultrasound
- 📍 CT
- 📍 CT Screening
- 📍 Diagnostic Digital Mammography*
- 📍 Diagnostic X-ray
- 📍 Fluoroscopy
- 📍 Gynecological Ultrasound
- 📍 Hysterosalpingogram
- 📍 Image-Guided Needle Localization
- 📍 MRI
- 📍 Myelography
- 📍 Nuclear Medicine
- 📍 Obstetrical Ultrasound
- 📍 Screening Digital Mammography*
- 📍 Ultrasound

Duluth Outpatient Center
3805 Pleasant Hill Road
Duluth, Georgia 30096

Main Number 678.312.7000
Scheduling 678.312.3444
Fax Number 678.312.7376

