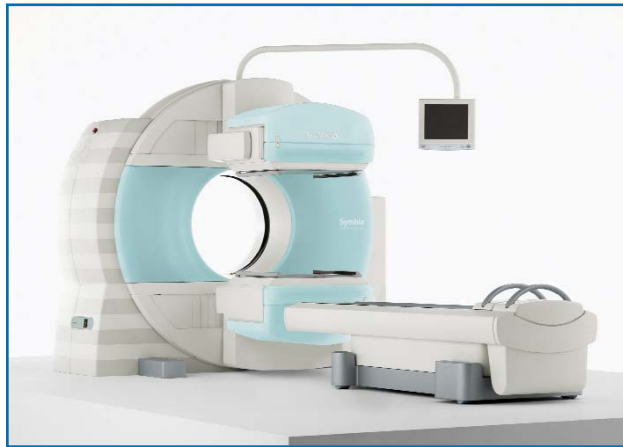


SPECT/CT Procedures

Some of our SPECT/CT procedures include exams of the:

- 📍 Bone
- 📍 GI Bleed
- 📍 Octreoscan
- 📍 Parathyroid
- 📍 Prostatect
- 📍 Tumor
- 📍 Renal



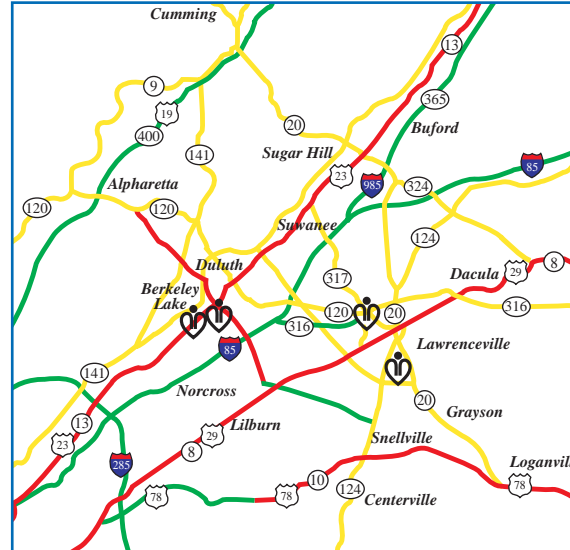
Finding Out the Results

Following your test, a board-certified Radiologist will interpret the results. A complete written report will be sent to your doctor. Because your doctor knows you and your medical condition and history, he can discuss the results with you in a more meaningful fashion.

To Schedule Your SPECT/CT at GHS

Please contact GHS Imaging Scheduling at 678.312.3444, with questions regarding your SPECT/CT or to schedule your appointment.

Map & Directions



Gwinnett Hospital System Locations

Call our Direction Line at 678.312.4652 for directions to any Gwinnett Hospital System facility, or visit www.gwinnettmedicalcenter.org.

Gwinnett Hospital System Film File Library

To check out your images, contact the Imaging Film Library:

Main Number	678.312.5663
Fax Number	770.339.3751



Lawrenceville • Duluth

The hospital Gwinnett deserves.

www.gwinnettmedicalcenter.org

SPECT/CT



Imaging Services

What is a SPECT/CT Scan?

As the name implies, this examination combines two scanning techniques into one: SPECT (Single Photon Emission Computed Tomography), which shows different functions in the body, and CT (Computed Tomography), which shows detailed structural anatomy.

The result of this combination is that doctors are now able to get highly defined 3D images from the inside of the human body with only one system and during one doctor's appointment.

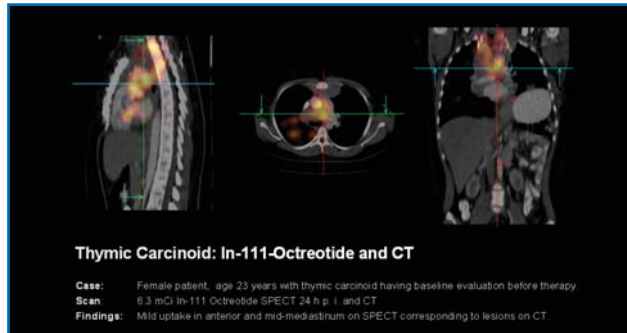
It combines both functional and anatomical information into one single scan, so your doctor will be able to determine its function status and pinpoint the exact location, size, nature, and extent of a disease - anywhere in the body.

Therefore, a SPECT/CT scan provides your doctor with information that may help to specify and improve any treatment that you require and possibly even reduce the risk of surgical procedures.

Why do I Need a SPECT/CT Scan?

SPECT/CT gives information about your body that is not available with other imaging methods such as an X-ray, CT, or MRI. SPECT scans show cellular function, and CT scans show anatomical details. Together, these provide valuable information that will assist your physician with a diagnosis.

One of the most important factors in the fight against disease is early detection.



Preparing for Your SPECT/CT Exam

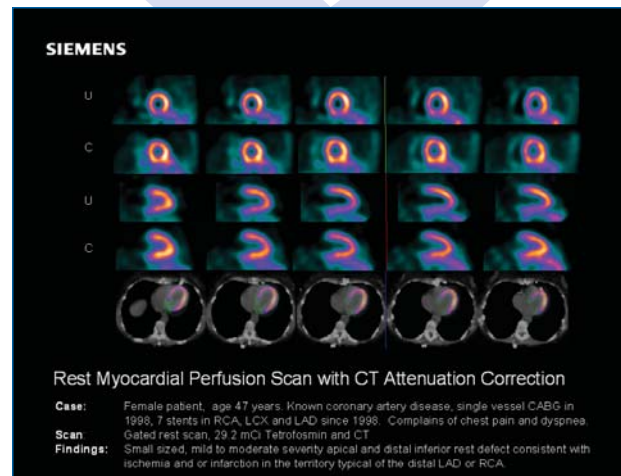
SPECT/CT does not always require fasting, special diets, or medication. For most tests, you can continue your regular work schedule and lifestyle. Here are some important things to remember when preparing for your SPECT/CT exam:

- 🚫 No food or drink for 4-6 hours before your exam.
- 🚫 Notify your physician if you are pregnant, breast feeding, or diabetic.
- 🚫 Take any prescribed medication, unless instructed otherwise.
- 🚫 Wear comfortable clothing.

The majority of SPECT/CT examinations require only a small injection into the vein to administer the radionuclide. The injection itself is painless, and there is very low chance of side-effects. You may be asked to continue lying quietly and still for a couple of minutes.

If you have a thyroid exam, you will only get a pill rather than an injection.

If you have a heart examination, you will undergo a stress test. This is a "routine" or "standard" treadmill exercise.



What to Expect

The SPECT/CT imaging procedure takes from 30 minutes to 4 hours depending on the scan ordered. When it is time for the examination, you will lie down on the padded examination table with the SPECT/CT detector over the body region being evaluated. The SPECT/CT camera, capable of imaging the areas of your body where the radiopharmaceutical has accumulated, will be moved close to you. The closer the camera is to your body, the better the images will be.

The scanner bed may move in toward the scanner opening for a short time, during which you will hear some noise coming from the system. This will complete the CT portion of the exam.

Simply relax, and follow the technologist's instructions. Your only participation will be to remain as still as possible during the exam and breathe normally. Movement of the body while the pictures are being taken may require the scan to be repeated. The technologist will keep you informed about what is going on during the examination. Since it is very important for you to be comfortable before the scan begins, most SPECT/CT systems offer entertainment features like a CD or DVD player.

Once you are finished, you will be instructed on what to do next. Typically, you are able to return to your normal daily routine after the test with little or no side-effects from the small amount of radiopharmaceutical material. The amount is so small that it will have no effect on other people around you.

